



Merchant Street, London, E3

BUTLER & STAG



Outstanding two bedroom two bathroom garden apartment set within a beautiful recently converted chapel in trendy Bow.



- Two Bedroom Garden Apartment
- Private Patio Courtyard
- Bespoke Shaker Design Kitchen with Quartz Work Surfaces
- Unfurnished
- 783 Sq/Ft Lateral Internal Living Space
- Two Ultra Modern Bathrooms
- Engineered Oak Flooring with Underfloor Heating
- Available from 13th May 2025

Situated on the ground floor and offering in excess of 780 Sq/Ft of lateral living space, this must-see apartment is conveniently situated between Mile End and Bow Road underground stations. The location is well-served by a range of amenities; some highly-rated gastropubs and eateries, local supermarkets and Victoria Park are all only a short distance away.

The apartment comprises of a spacious open-plan living / dining space to the kitchen, two large double bedrooms, two bathrooms (one en-suite) and a private patio courtyard to the rear. The interior spaces are defined by a rich ash oak flooring, black-panelled doors and jet black quartz work surfaces, adding visual excitement and depth to each room.

The property further benefits from underfloor heating, video entry phone system and secure bike storage.

Offered unfurnished and available from 13th May 2025.

EPC Rating D
Council Tax Band D

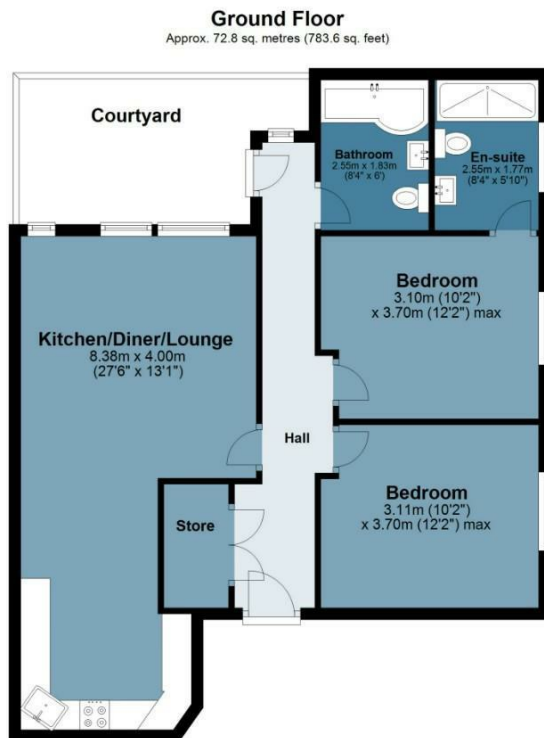




Flat 1, 5a Merchant Street

Approx. Gross Internal Area 72.8 Sq M (783.6 Sq Ft)

BUTLER & STAG



Floor plan is for illustrative purposes only and is not to scale. Every attempt has been made to ensure the accuracy of the floor plan shown, however all measurements, fixtures, fittings and data shown are an approximate interpretation for illustrative purposes only.

IMPORTANT NOTICE - These particulars have been prepared in good faith and they are not intended to constitute part of an offer or contract. We have not performed a structural survey on this property and the services, appliances and specific fittings have not been tested. All photographs, measurements, floor plans and distances referred to are given as a guide and should not be relied upon.

BUTLER & STAG

☎ 020 8102 1236

🏠 508 Roman Road, Bow, London, E3 5LU

✉ bow@butlerandstag.com

www.butlerandstag.uk